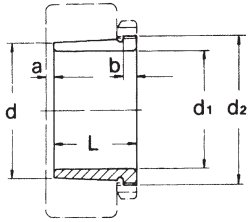


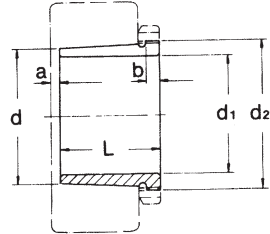
Nut for Adapter/Withdrawal Sleeves

FSQ

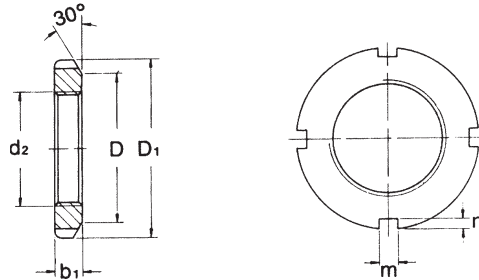
Series: AH31



AH22, AH32



Series: AN/KM



mm

| No. | d | d ₁ | L | b | a | d ₂ | Weight (kg) |
|----------|-----|----------------|-----|----|----|----------------|-------------|
| AHX 3120 | 100 | 95 | 64 | 11 | 4 | M110x2 | 0.650 |
| AHX 3122 | 110 | 105 | 68 | 11 | 4 | M120x2 | 0.760 |
| AHX 3124 | 120 | 115 | 75 | 12 | 4 | M130x2 | 0.950 |
| AHX 3126 | 130 | 125 | 78 | 12 | 4 | M140x2 | 1.08 |
| AHX 3128 | 140 | 135 | 83 | 14 | 5 | M150x2 | 1.28 |
| AHX 3130 | 150 | 145 | 96 | 15 | 5 | M165x3 | 1.79 |
| AH 3132 | 160 | 150 | 103 | 16 | 5 | M180x3 | 3.21 |
| AH 3134 | 170 | 160 | 104 | 16 | 5 | M190x3 | 3.40 |
| AH 3136 | 180 | 170 | 116 | 19 | 6 | M200x3 | 4.22 |
| AH 3138 | 190 | 180 | 125 | 20 | 6 | Tr210x4 | 4.89 |
| AH 3140 | 200 | 190 | 134 | 21 | 6 | Tr220x4 | 5.49 |
| AH 3144 | 220 | 200 | 145 | 23 | 6 | Tr240x4 | 10.4 |
| AH 3148 | 240 | 220 | 154 | 25 | 7 | Tr260x4 | 12.0 |
| AH 3152 | 260 | 240 | 172 | 26 | 7 | Tr290x4 | 16.2 |
| AH 3156 | 280 | 260 | 175 | 28 | 8 | Tr310x5 | 17.5 |
| AH 3160 | 300 | 280 | 192 | 30 | 8 | Tr330x5 | 20.8 |
| AH 3164 | 320 | 300 | 209 | 31 | 8 | Tr350x5 | 24.5 |
| AH 3168 | 340 | 320 | 225 | 33 | 9 | Tr370x5 | 29.0 |
| AH 3172 | 360 | 340 | 229 | 35 | 9 | Tr400x5 | 33.0 |
| AH 3176 | 380 | 360 | 232 | 36 | 10 | Tr420x5 | 35.7 |
| AH 3180 | 400 | 380 | 240 | 38 | 10 | Tr440x5 | 39.5 |
| AH 3184 | 420 | 400 | 266 | 40 | 10 | Tr460x5 | 46.5 |
| AHX 3188 | 440 | 420 | 270 | 42 | 11 | Tr480x5 | 49.8 |
| AHX 3192 | 460 | 440 | 285 | 43 | 11 | Tr510x6 | 57.9 |
| AHX 3196 | 480 | 460 | 295 | 45 | 12 | Tr530x6 | 63.1 |
| AHX 3218 | 90 | 85 | 63 | 10 | 4 | M100x2 | 0.576 |
| AHX 3219 | 95 | 90 | 67 | 11 | 4 | M105x2 | 0.655 |
| AHX 3220 | 100 | 95 | 73 | 11 | 4 | M110x2 | 0.767 |
| AHX 3222 | 110 | 105 | 82 | 11 | 4 | M125x2 | 1.04 |
| AHX 3224 | 120 | 115 | 90 | 13 | 4 | M135x2 | 1.30 |
| AHX 3226 | 130 | 125 | 98 | 15 | 4 | M145x2 | 1.58 |
| AHX 3228 | 140 | 135 | 104 | 15 | 5 | M155x3 | 1.84 |
| AHX 3230 | 150 | 145 | 114 | 17 | 5 | M165x3 | 2.22 |
| AH 3232 | 160 | 150 | 124 | 20 | 6 | M180x3 | 4.08 |
| AH 3234 | 170 | 160 | 134 | 24 | 6 | M190x3 | 4.80 |
| AH 3236 | 180 | 170 | 140 | 24 | 6 | M200x3 | 5.32 |
| AH 3238 | 190 | 180 | 145 | 25 | 7 | Tr210x4 | 5.90 |
| AH 3240 | 200 | 190 | 153 | 25 | 7 | Tr220x4 | 6.68 |
| AH 3260 | 300 | 280 | 228 | 34 | 8 | Tr330x5 | 26.0 |
| AH 3264 | 320 | 300 | 246 | 36 | 8 | Tr350x5 | 30.6 |
| AH 2236 | 180 | 170 | 105 | 17 | 5 | M200x3 | 3.73 |
| AH 2238 | 190 | 180 | 112 | 18 | 5 | Tr210x4 | 4.25 |
| AH 2240 | 200 | 190 | 118 | 19 | 5 | Tr220x4 | 4.68 |
| AH 2244 | 220 | 200 | 130 | 20 | 6 | Tr240x4 | 9.10 |
| AH 2248 | 240 | 220 | 144 | 21 | 6 | Tr260x4 | 11.1 |
| AH 2252 | 260 | 240 | 155 | 23 | 6 | Tr290x4 | 14.0 |
| AH 2256 | 280 | 260 | 155 | 24 | 8 | Tr310x5 | 15.2 |
| AH 2260 | 300 | 280 | 170 | 26 | 8 | Tr330x5 | 18.1 |
| AH 2264 | 320 | 300 | 180 | 27 | 10 | Tr350x5 | 20.2 |

| No. | d ₂ | D ₁ | b ₁ | D | m | n | Weight (kg) |
|-----------|----------------|----------------|----------------|------|----|-----|-------------|
| AN/KM0 | M 10x0.75 | 18 | 4 | 13.5 | 3 | 2 | 0.004 |
| AN/KM1 | M 12x1 | 22 | 4 | 17 | 3 | 2 | 0.007 |
| AN/KM2 | M 15x1 | 25 | 5 | 21 | 4 | 2 | 0.010 |
| AN/KM3 | M 17x1 | 28 | 5 | 24 | 4 | 2 | 0.013 |
| AN/KM4 | M 20x1 | 32 | 6 | 26 | 4 | 2 | 0.019 |
| AN/KM5 | M 25x1.5 | 38 | 7 | 32 | 5 | 2 | 0.025 |
| AN/KM6 | M 30x1.5 | 45 | 7 | 38 | 5 | 2 | 0.043 |
| AN/KM7 | M 35x1.5 | 52 | 8 | 44 | 5 | 2 | 0.053 |
| AN/KM8 | M 40x1.5 | 58 | 9 | 50 | 6 | 2.5 | 0.085 |
| AN/KM9 | M 45x1.5 | 65 | 10 | 56 | 6 | 2.5 | 0.119 |
| AN/KM10 | M 50x1.5 | 70 | 11 | 61 | 6 | 2.5 | 0.148 |
| AN/KM11 | M 55x2 | 75 | 11 | 67 | 7 | 3 | 0.158 |
| AN/KM12 | M 60x2 | 80 | 11 | 73 | 7 | 3 | 0.174 |
| AN/KM13 | M 65x2 | 85 | 12 | 79 | 7 | 3 | 0.203 |
| AN/KM14 | M 70x2 | 92 | 12 | 85 | 8 | 3.5 | 0.242 |
| AN/KM15 | M 75x2 | 98 | 13 | 90 | 8 | 3.5 | 0.287 |
| AN/KM16 | M 80x2 | 105 | 15 | 95 | 8 | 3.5 | 0.397 |
| AN/KM17 | M 85x2 | 110 | 16 | 102 | 8 | 3.5 | 0.451 |
| AN/KM18 | M 90x2 | 120 | 16 | 108 | 10 | 4 | 0.556 |
| AN/KM19 | M 95x2 | 125 | 17 | 113 | 10 | 4 | 0.658 |
| AN/KM20 | M100x2 | 130 | 18 | 120 | 10 | 4 | 0.698 |
| AN/KM21 | M105x2 | 140 | 18 | 126 | 12 | 5 | 0.845 |
| AN/KM22 | M110x2 | 145 | 19 | 133 | 12 | 5 | 0.965 |
| AN/KM23 | M115x2 | 150 | 19 | 137 | 12 | 5 | 1.01 |
| AN/KM24 | M120x2 | 155 | 20 | 138 | 12 | 5 | 1.08 |
| AN/KM25 | M125x2 | 160 | 21 | 148 | 12 | 5 | 1.19 |
| AN/KM26 | M130x2 | 165 | 21 | 149 | 12 | 5 | 1.25 |
| AN/KM27 | M135x2 | 175 | 22 | 160 | 14 | 6 | 1.55 |
| AN/KM28 | M140x2 | 180 | 22 | 160 | 14 | 6 | 1.56 |
| AN/KM29 | M145x2 | 190 | 24 | 172 | 14 | 6 | 1.80 |
| AN/KM30 | M150x2 | 195 | 24 | 171 | 14 | 6 | 2.03 |
| AN/KM31 | M155x3 | 200 | 25 | 182 | 16 | 7 | 2.30 |
| AN/KM32 | M160x3 | 210 | 25 | 182 | 16 | 7 | 2.59 |
| AN/KM33 | M165x3 | 210 | 26 | 193 | 16 | 7 | 2.70 |
| AN/KM34 | M170x3 | 220 | 26 | 193 | 16 | 7 | 2.80 |
| AN/KM36 | M180x3 | 230 | 27 | 203 | 18 | 8 | 3.07 |
| AN/KM38 | M190x3 | 240 | 28 | 214 | 18 | 8 | 3.39 |
| AN/KM40 | M200x3 | 250 | 29 | 226 | 18 | 8 | 3.69 |
| ANL/KML24 | M120x2 | 145 | 20 | 135 | 12 | 5 | 0.780 |
| ANL/KML26 | M130x2 | 155 | 21 | 145 | 12 | 5 | 0.880 |
| ANL/KML28 | M140x2 | 165 | 22 | 155 | 12 | 5 | 0.990 |
| ANL/KML30 | M150x2 | 180 | 24 | 170 | 14 | 5 | 1.38 |
| ANL/KML32 | M160x3 | 190 | 25 | 180 | 14 | 5 | 1.56 |
| ANL/KML34 | M170x3 | 200 | 26 | 190 | 16 | 5 | 1.72 |
| ANL/KML36 | M180x3 | 210 | 27 | 200 | 16 | 5 | 1.95 |
| ANL/KML38 | M190x3 | 220 | 28 | 210 | 16 | 5 | 2.08 |
| ANL/KML40 | M200x3 | 240 | 29 | 222 | 18 | 8 | 2.98 |

• Larger size is also available.