

The BND housings are designed for grease lubrication.

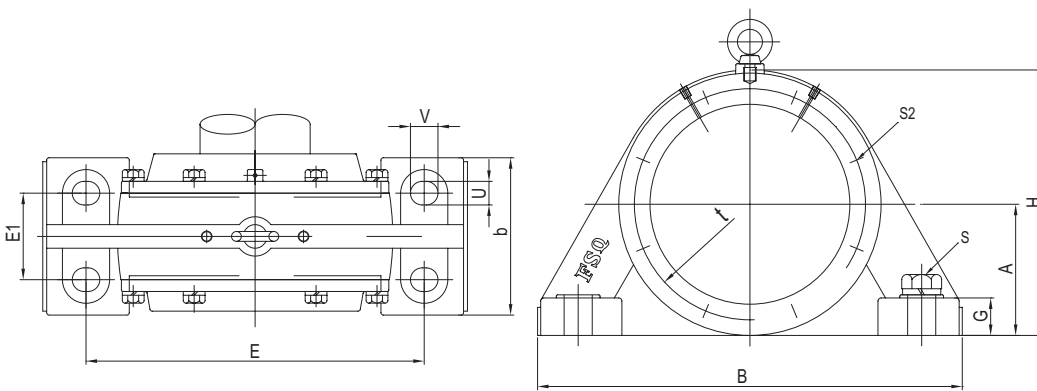
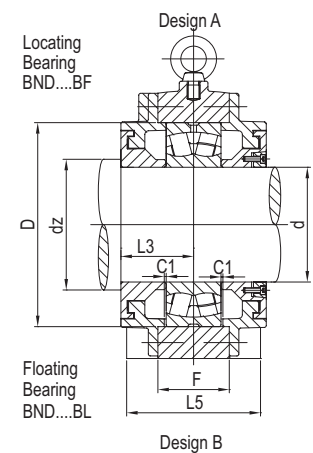
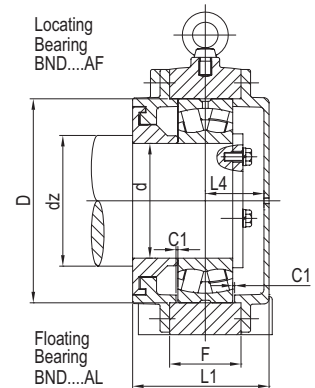
The standard material for the housing bodies is cast steel.

Housing bodies of spheroidal cast iron is available upon request.

Plummer block housings of series BND are sealed with labyrinths.

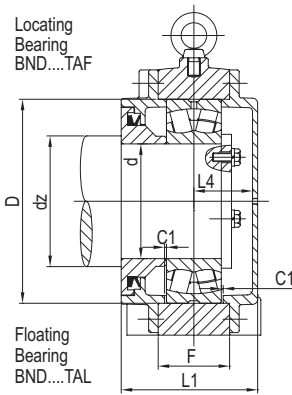
On request FSQ supply also Taconite seals (T) where a V ring is integrated in the labyrinth. The seals must be separately re-greasible.

for bearings with cylindrical bore
(labyrinth seal)

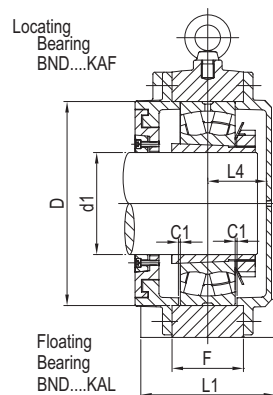


Housing No.	Shaft Dia				Dimensions mm											
	d	d1 mm	dc min	dz min	D	B	b	G	F	A	L1	L2	L3	L4	L5	
BND2213	65	60	66	71	120	235	70	22	44	80	100	120	55	39	110	
BND2215	75	65	71	81	130	285	85	35	45	90	105	125	55	44	110	
BND2218	90	80	88	98	160	370	110	38	55	110	104	123	53	45	105	
BND2220	100	90	98	108	180	400	120	40	65	130	141	168	78	57	156	
BND2222	110	100	108	118	200	440	130	42	73	140	149.2	172	82.6	60	165.2	
BND2224	120	110	118	128	215	470	140	42	77	150	143	168	74	61	148	
BND2226	130	115	127	142	230	500	150	45	84	160	172	202	95	69	190	
BND2228	140	125	137	152	250	530	160	50	88	170	166	196	88	70	176	
BND2230	150	135	147	162	270	550	170	54	97	180	177	202	93.5	76	187	
BND2232	160	140	152	172	290	600	180	58	106	190	189	226	103	78	206	
BND2234	170	150	166	186	310	640	200	62	111	200	216	256	118	88	236	
BND2236	180	160	176	196	320	680	210	65	112	210	214	248	114	92	228	
BND2238	190	170	186	206	340	710	220	85	115	220	222	258	114	98	228	
BND2240	200	180	196	216	360	780	240	75	128	235	230	269	123	99	246	
BND2244	220	200	216	236	400	890	250	80	140	270	264	314	142	112	284	
BND2248	240	220	236	256	440	900	250	90	150	290	268	311	138	120	276	
BND2252	260	240	260	280	480	960	290	95	161	310	286	326	148	126	296	
BND2256	280	260	280	300	500	1000	300	100	160	320	297	354	157	128	314	
BND2260	300	280	300	320	540	1100	330	105	178	350	317	352	156	149	312	
BND2264	320	300	320	340	580	1150	360	115	180	370	333	381	163	158	326	
BND2268	340	320	344	364	580	1200	380	125	201	390	375	430	187.5	176	375	
BND2272	360	340	364	384	600	1280	400	130	205	410	375	435	185	178	370	
BND2276	380	360	384	404	620	1350	405	135	230	425	433	470	203	218	406	
BND2280	400	380	404	424	650	1430	450	145	229	450	433	498	216.5	202	433	
BND2284	420	400	430	450	700	1500	470	150	238	470	433	498	216.5	202	433	

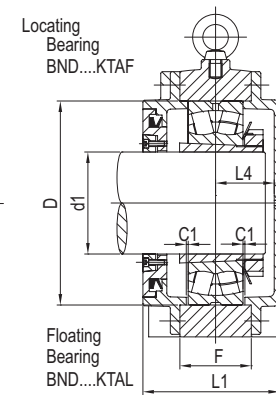
for bearings with cylindrical bore
(Taconite seal)



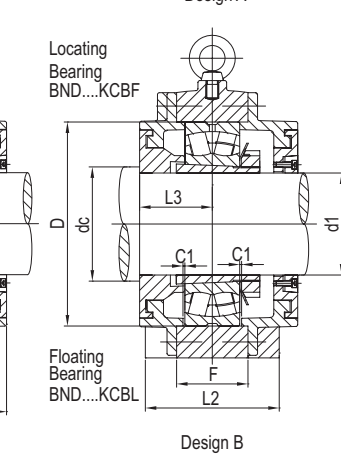
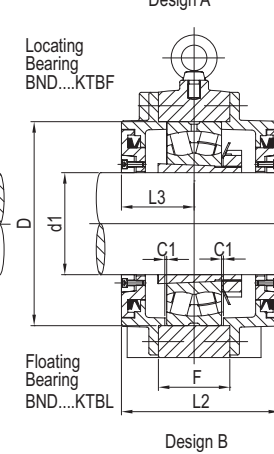
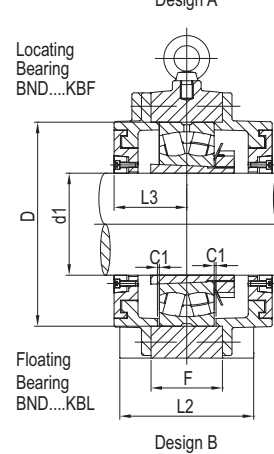
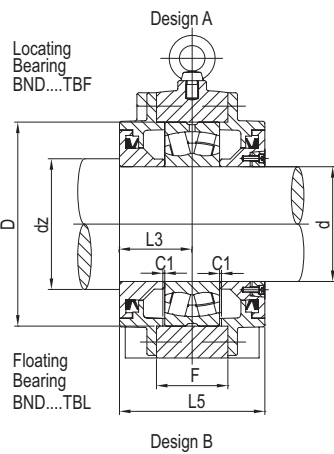
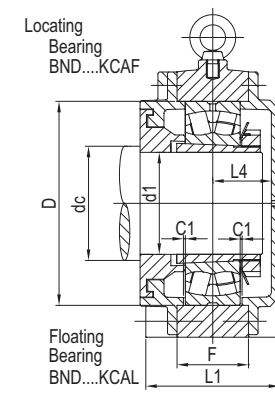
for bearings with tapered bore and
adapter sleeve(labyrinth seal)



for bearings with tapered bore
adapter sleeve(taconite seal)



for bearings with tapered bore and
adapter sleeve,and for shaft with
aboutment shoulders(labyrinth seal)



H	E	E1	S2	S2 Q'ty	C1	t	U	V	Bolts S	Adapter Sleeve	Housing Weight (kg)	Bearing No.
155	185	40	M6	6	2	135	15	20	M10	H313	23	22213
180	225	45	M6	6	2	155	20	28	M16	H315	15	22215
220	290	60	M8	6	2	185	23	32	M20	H318	28	22218
255	320	65	M8	6	2.5	205	30	35	M24	H320	30	22220
280	350	70	M12	6	2.5	230	30	35	M24	H322	50	22222
300	370	75	M12	6	2.5	245	30	35	M24	H3124	58	22224
315	400	85	M12	6	3	260	30	35	M24	H3126	65	22226
345	430	85	M16	6	3	285	30	35	M24	H3128	70	22228
365	450	90	M16	6	3	305	36	45	M30	H3130	85	22230
385	490	105	M16	6	3	330	36	45	M30	H3132	100	22232
405	525	110	M16	8	3	350	36	45	M30	H3134	105	22234
425	550	120	M16	8	3	370	36	45	M30	H3136	130	22236
455	560	120	M16	8	3	380	42	52	M36	H3138	170	22238
475	640	140	M16	8	4	420	42	52	M36	H3140	185	22240
550	720	140	M20	8	4	455	42	52	M36	H3144X	290	22244
585	750	140	M20	8	4	510	42	52	M36	H3148X	315	22248
625	800	160	M20	8	3	535	42	52	M36	H3152X	370	22252
645	840	170	M24	8	4	555	42	52	M36	H3156X	420	22256
695	920	180	M24	8	4	600	56	75	M48	H3160	485	22260
745	960	200	M24	8	5	640	56	75	M48	H3164	600	22264
790	990	200	M30	8	5	680	64	85	M56	H3168	635	22268
820	1040	210	M30	8	5	710	72	90	M64	H3172	690	22272
865	1100	225	M30	8	5	745	72	90	M64	H3176	900	22276
900	1160	240	M30	8	5	790	72	90	M64	H3180	940	22280
950	1220	255	M30	8	5	835	72	90	M64	H3184	1055	22284