

The BND housings are designed for grease lubrication.

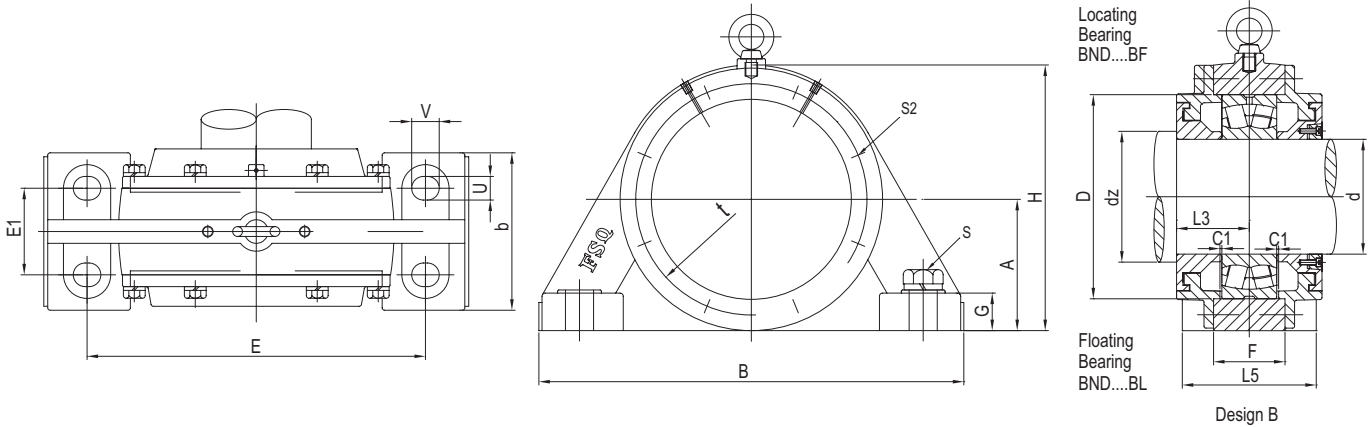
The standard material for the housing bodies is cast steel.

Housing bodies of spheroidal cast iron is available upon request.

Plummer block housings of series BND are sealed with labyrinths.

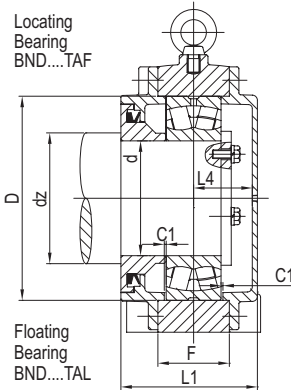
On request FSQ supply also Taconite seals (T) where a V ring is integrated in the labyrinth. The seals must be separately re-greaseable.

for bearings with cylindrical bore
(labyrinth seal)



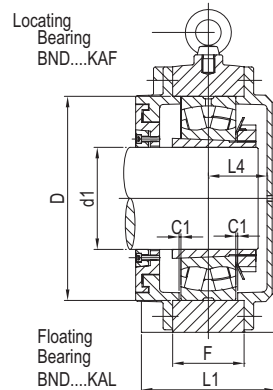
Housing No.	Shaft Dia				Dimensions mm											
	d	d1 mm	dc min	dz min	D	B	b	G	F	A	L1	L2	L3	L4	L5	
BND3222	110	100	108	118	200	440	130	42	89.8	140	166	194	91	68	182	
BND3224	120	110	118	128	215	470	140	42	95	150	161	186	83	70	166	
BND3226	130	115	127	142	230	500	150	45	100	160	188	218	103	77	208	
BND3228	140	125	137	152	250	530	160	50	108	170	186	216	98	80	196	
BND3230	150	135	147	162	270	550	170	54	120	180	200	225	105	87	210	
BND3232	160	140	152	172	290	600	180	58	130	190	213	250	115	90	230	
BND3234	170	150	166	186	310	640	200	62	135	200	240	280	130	100	260	
BND3236	180	160	176	196	320	680	210	65	138	210	240	274	127	105	254	
BND3238	190	170	186	206	340	710	220	85	143	220	250	286	128	112	256	
BND3240	200	180	196	216	360	780	240	75	158	235	260	299	138	114	276	
BND3244	220	200	216	236	400	850	250	80	175	260	279	329	147	122	294	
BND3248	240	220	236	256	440	900	250	90	190	290	308	351	158	140	316	
BND3252	260	240	260	280	480	960	290	95	205	310	330	370	170	148	340	
BND3256	280	260	280	300	500	1000	300	100	206	320	343	400	180	151	360	
BND3260	300	280	300	320	540	1100	330	105	230	350	369	404	182	175	364	
BND3264	320	300	320	340	580	1150	360	115	238	370	391	439	192	187	384	
BND3268	340	320	344	364	580	1200	380	125	260	390	434	489	217	205	434	
BND3272	360	340	364	384	650	1280	400	130	267	410	437	497	216	209	432	
BND3276	380	360	384	404	680	1350	405	135	295	425	489	529	232	244	464	
BND3280	400	380	404	424	720	1430	450	145	300	450	504	569	252	237	504	
BND3284	420	400	430	450	760	1500	470	150	315	470	510	575	255	240	510	

for bearings with cylindrical bore
(Taconite seal)



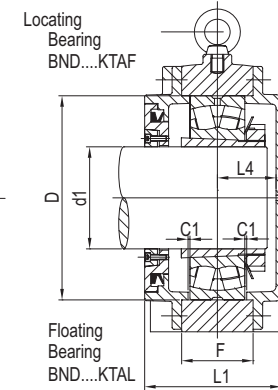
Design A

for bearings with tapered bore and
adapter sleeve(labyrinth seal)



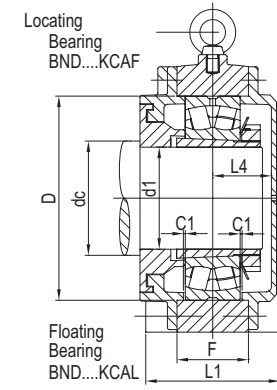
Design A

for bearings with tapered bore
adapter sleeve(taconite seal)

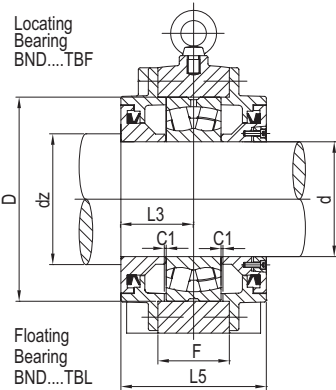


Design A

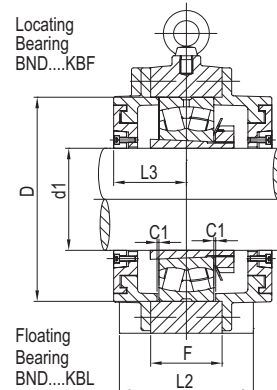
for bearings with tapered bore and
adapter sleeve, and for shaft with
aboutment shoulders(labyrinth seal)



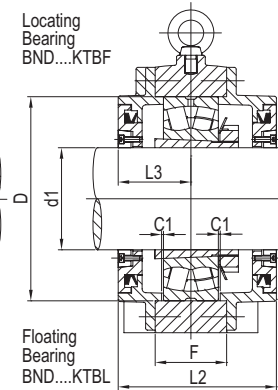
Design A



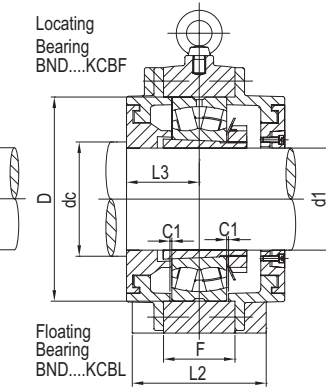
Design B



Design B



Design B



Design B

H	E	E1	S2	S2 Q'ty	C1	t	U	V	Bolts S	Adapter Sleeve	Housing Weight (kg)	Bearing No.
280	350	70	M12	6	2.5	230	30	35	M24	H2322	35	23222
300	370	75	M12	6	2.5	245	30	35	M24	H2324	40	23224
315	400	85	M12	6	3	260	30	35	M24	H2326	50	23226
345	430	85	M16	6	3	285	30	35	M24	H2328	65	23228
365	450	90	M16	6	3	305	36	45	M30	H2330	75	23230
385	490	105	M16	6	3	330	36	45	M30	H2332	90	23232
405	525	110	M16	8	3	350	36	45	M30	H2334	120	23234
425	550	120	M16	8	3	370	36	45	M30	H2336	140	23236
455	560	120	M16	8	3	380	42	52	M36	H2338	170	23238
475	640	140	M16	8	4	420	42	52	M36	H2340	205	23240
525	700	140	M20	8	4	445	42	52	M36	H2344X	240	23244
585	750	140	M20	8	4	510	42	52	M36	H2348X	330	23248
625	800	160	M20	8	3	535	42	52	M36	H2352X	380	23252
645	840	170	M24	8	4	555	42	52	M36	H2356X	490	23256
705	920	180	M24	8	4	600	56	75	M48	H3260	570	23260
745	960	200	M24	8	5	640	56	75	M48	H3264	665	23264
790	990	200	M30	8	5	680	64	85	M56	H3268	755	23268
820	1040	210	M30	8	5	710	72	90	M64	H3272	950	23272
860	1100	225	M30	8	5	745	72	90	M64	H3276	1100	23276
900	1160	240	M30	8	5	790	72	90	M64	H3280	1205	23280
950	1220	255	M30	8	5	835	72	90	M64	H3284	1310	23284