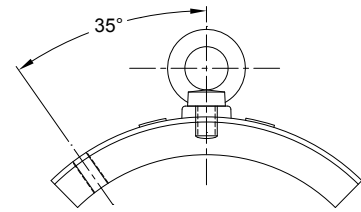


● Split design

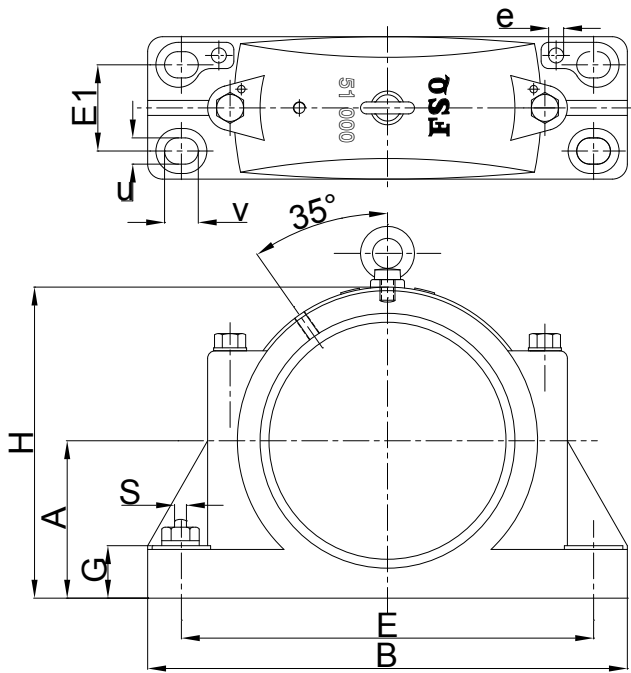
● For aligning cylindrical roller bearings (SL 05 & SL 06)

The pin holes at the housing base is not drilled unless otherwise specified by customer upon order.



GG51 260 and up comes with eye bolt.

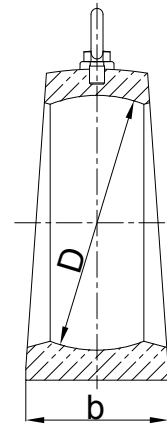
Housing No.	Nominal Dimensions (mm)													
	D	B	b	A	H	G	u	v	E	E1	e	S	Bolt	Eye bolt
GG51 120	120	260	70	70	142	25	18	21	220	-	12	M16	M10x1.0	-
GG51 140	140	290	80	90	175	30	18	21	245	-	12	M16	M10x1.0	-
GG51 150	150	330	85	95	185	40	22	26	280	-	12	M20	M10x1.0	-
GG51 170	170	350	90	105	208	45	22	26	300	-	12	M20	M10x1.0	-
GG51 180	180	360	90	110	220	45	22	26	310	-	12	M20	M10x1.0	-
GG51 200	200	420	115	125	245	50	26	32	360	-	16	M24	M10x1.0	-
GG51 210	210	440	120	130	255	50	26	32	375	-	16	M24	M10x1.0	-
GG51 225	225	460	130	140	275	60	26	32	390	-	16	M24	M10x1.0	-
GG51 240	240	475	140	150	295	60	26	32	405	-	16	M24	M10x1.0	-
GG51 260	260	525	150	160	325	60	35	40	445	-	20	M30	M16x1.5	M16
GG51 280	280	540	160	175	350	65	35	40	460	-	20	M30	M16x1.5	M16
GG51 290	290	575	170	180	360	65	35	40	495	-	20	M30	M16x1.5	M20
GG51 310	310	605	180	190	380	70	35	40	520	-	20	M30	M16x1.5	M20



•Split design

•For aligning cylindrical roller bearings (SL 05 & SL 06)

The pin holes at the housing base is not drilled unless otherwise specified by customer upon order.



Housing No.	Nominal Dimensions (mm)													
	D	B	b	A	H	G	u	v	E	E1	e	S	Bolt	Eye bolt
GG51 340	340	640	190	210	415	70	35	45	550	115	20	M30	M16x1.5	M20
GG51 360	360	670	210	230	445	75	35	45	575	130	20	M30	M16x1.5	M20
GG51 400	400	720	230	250	495	80	35	45	630	150	20	M30	M16x1.5	M24
GG51 420	420	760	230	260	520	80	35	45	665	150	20	M30	M16x1.5	M24
GG51 460	460	810	250	280	560	85	35	45	715	170	20	M30	M16x1.5	M24
GG51 480	480	860	260	290	580	85	42	55	750	170	20	M36	M16x1.5	M24
GG51 520	520	950	300	320	640	100	42	55	830	200	25	M36	M16x1.5	M30
GG51 540	540	990	320	335	670	110	42	55	870	220	25	M36	M16x1.5	M30
GG51 560	560	1040	340	345	690	110	49	60	900	220	25	M42	M16x1.5	M30
GG51 600	600	1130	360	370	740	120	49	60	990	240	25	M42	M16x1.5	M30