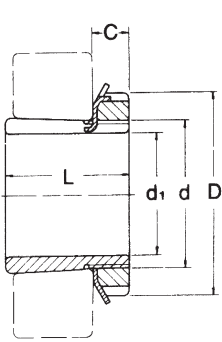
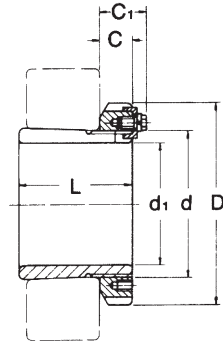


Series: H30 (HE)

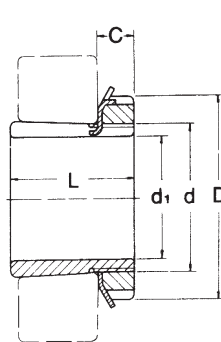
Series: H31 (HE)



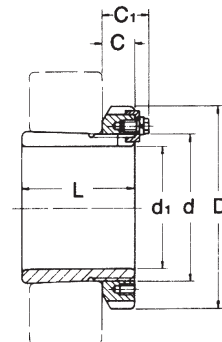
d1 ≤ 180mm



d1 > 180mm



d1 ≤ 180mm



d1 > 180mm

mm

No.	d	d1	L	D	C	C1	Weight (kg)	No.	d	d1	L	D	C	C1	Weight (kg)
H 3024	120	110	72	145	22	-	1.93	H 3132	160	140	119	210	28	-	7.67
H 3026	130	115	80	155	23	-	2.85	H 3134	170	150	122	220	29	-	8.38
H 3028	140	125	82	165	24	-	3.16	H 3136	180	160	131	230	30	-	9.5
H 3030	150	135	87	180	26	-	3.89	H 3138	190	170	141	240	31	-	10.8
H 3032	160	140	93	190	28	-	5.21	H 3140	200	180	150	250	32	-	12.1
H 3034	170	150	101	200	29	-	5.99	H 3144	220	200	161	280	35	-	14.7
H 3036	180	160	109	210	30	-	6.83	H 3148	240	220	172	300	37	-	17.3
H 3038	190	170	112	220	31	-	7.45	H 3152	260	240	190	330	39	-	22.0
H 3040	200	180	120	240	32	-	9.19	H 3156	280	260	195	350	41	-	24.5
H 3044	220	200	126	260	30	41	10.3	H 3160	300	280	208	380	40	53	30.2
H 3048	240	220	133	290	34	46	13.2	H 3164	320	300	226	400	42	56	34.9
H 3052	260	240	145	310	34	46	15.3	H 3168	340	320	254	440	55	72	49.5
H 3056	280	260	152	330	38	50	17.7	H 3172	360	340	259	460	58	75	54.2
H 3060	300	280	168	360	42	54	22.8	H 3176	380	360	264	490	60	77	61.7
H 3064	320	300	171	380	42	55	24.6	H 3180	400	380	272	520	62	82	70.6
H 3068	340	320	187	400	45	58	28.7	H 3184	420	400	304	540	70	90	84.2
H 3072	360	340	188	420	45	58	30.5	H 3188	440	410	307	560	70	90	104
H 3076	380	360	193	450	48	62	35.8	H 3192	460	430	326	580	75	95	116
H 3080	400	380	210	470	52	66	41.3	H 3196	480	450	335	620	75	95	133
H 3084	420	400	212	490	52	66	43.7	H 3260	300	280	240	380	40	53	34.1
H 3088	440	410	228	520	60	77	65.2	H 3264	320	300	258	400	42	56	39.3
H 3092	460	430	234	540	60	77	69.5	H 3268	340	320	288	440	55	72	54.6
H 3096	480	450	237	560	60	77	73.3	H 3272	360	340	299	460	58	75	60.6
H 3120	100	90	76	130	20	-	1.80	H 3276	380	360	310	490	60	77	69.6
H 3122	110	100	81	145	21	-	2.25	H 3280	400	380	328	520	62	82	81.0
H 3124	120	110	88	155	22	-	2.64	H 3284	420	400	352	540	70	90	94.0
H 3126	130	115	92	165	23	-	3.66	H 3288	440	410	361	560	70	90	118
H 3128	140	125	97	180	24	-	4.34	H 3292	460	430	382	580	75	95	132
H 3130	150	135	111	195	26	-	5.52	H 3296	480	450	397	620	75	95	152

- H3044 and larger sizes are fitted with nut ANL44/HM3044 and washer ALL44/MS3044 and up.
- H3144 and larger sizes are fitted with nut AN44/HM3144 and up.
- H3160 and larger sizes are fitted with nut AL60/MS3160 and up.
- Larger size than H3296 is also available.