

To enable the oil injection method to ease mounting and dismounting. FSQ adapter sleeves having a bore diameter of 140mm & up can be supplied to special order already prepared for oil injection. (OH..H)

These adapter sleeves have an oil duct at the threaded side and an oil distributor groove on the outside surface. If oil is injected through this duct and groove, an oil film is formed between the mating surfaces of the bearing and sleeve and the force required to mount the bearing is reduced considerably.

In addition to these standard sleeves which are designated OH..H and shown in the product tables, FSQ produces sleeves to three other designs which differ in the number and arrangement of the oil ducts and distributor grooves, as described below.

- OH design

The oil supply duct is at the side opposite to the threaded section and there is a distributor groove in the outside surface.

- OH..B design

The oil supply duct (or ducts) is at the side opposite to the threaded section and there are distributor grooves in the bore as well as the outside surface. Sleeves up to and including size 40 have one supply duct, larger sleeves have two.

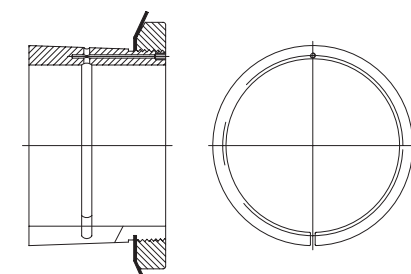
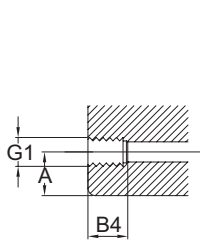
- OH..HB design

These sleeves have an oil supply duct (or ducts) at the threaded side of the sleeve and distributor grooves in the bore as well as the outside surface. Sleeves up to and including size 40 have one supply duct, larger sleeves have two.

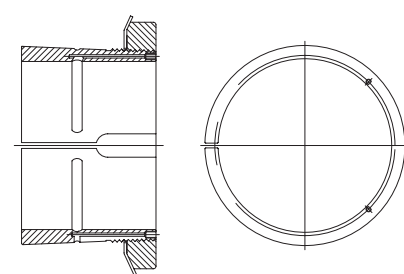
- AOH-FSQ withdrawal sleeves having a bore diameter of 200mm and above are supplied as standard in the AOH design which enables the oil injection method to be used.

The dimensions of metric FSQ adapter sleeves are in accordance with ISO 2982-1:1995; except the bore diameter of metric sleeves for inch shafts.

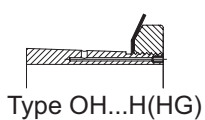
The dimensions of FSQ adapter sleeves are inch dimensions are in accordance with ANSI/ABMA Std. 8.2-1991.



Type OH...HB(HGJ) Size 40 and under



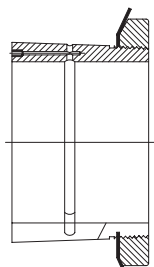
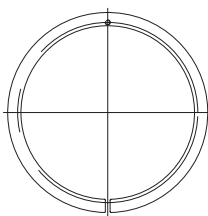
Type OH...HB(HGJ) Size 44 and upper



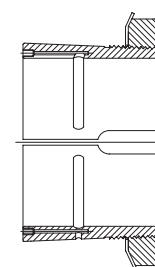
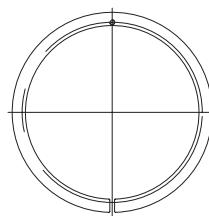
Type OH...H(HG)



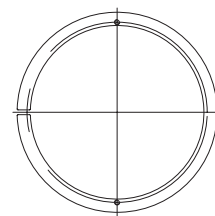
Type OH(HK)



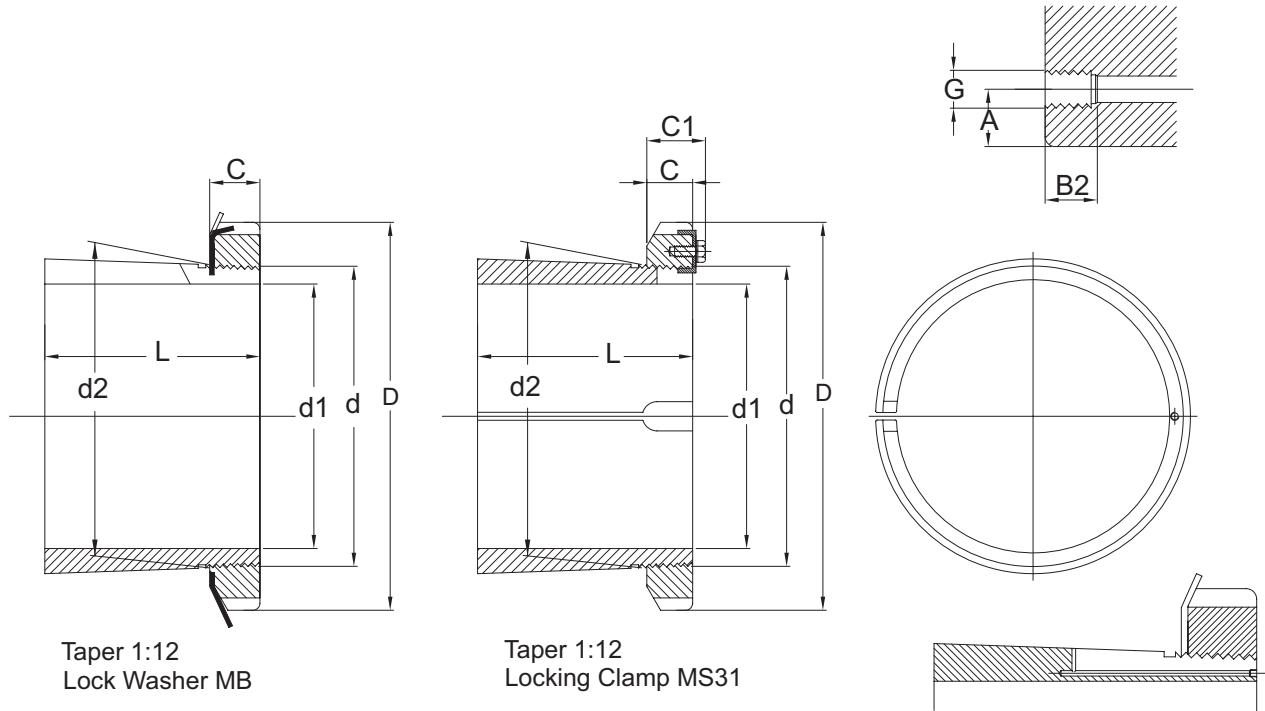
Type OH...B(HKJ) Size 40 and under



Type OH...B(HKJ) Size 44 and upper



Hydraulic Adapter Sleeves



Taper 1:12
Lock Washer MB

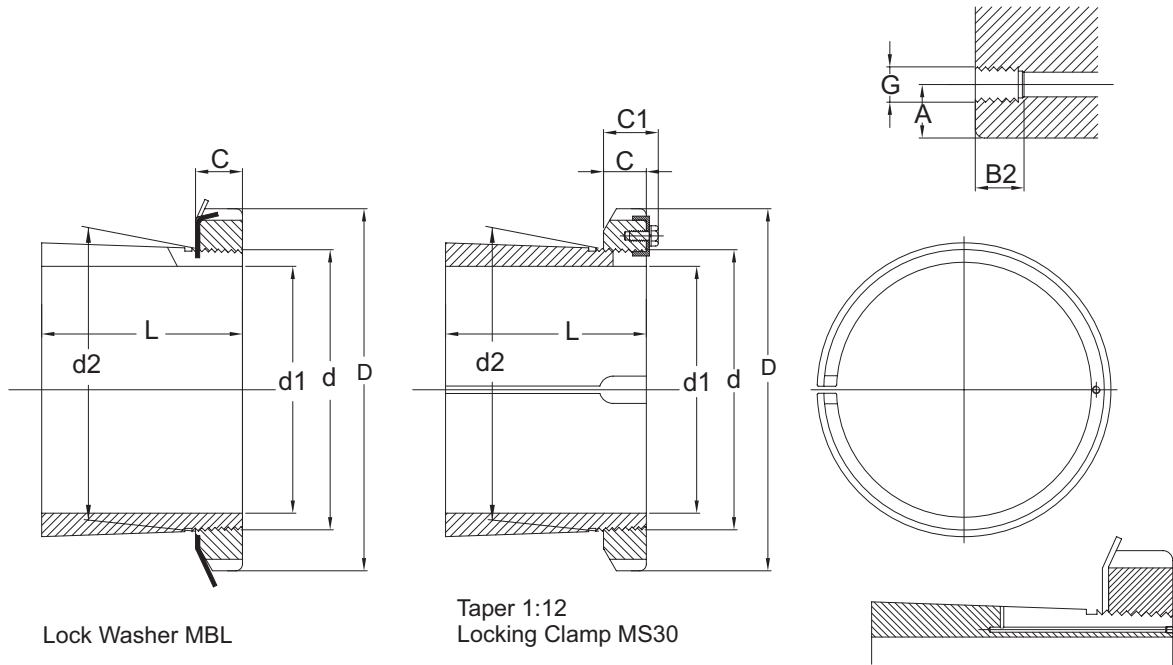
Taper 1:12
Locking Clamp MS31

No.	d1	d2	D	L	C	C1	B2	A	d	G		Weight	Lock nut	Locking device	Appropriate hydraulic nut
	mm	mm	mm	mm	mm	mm	mm	mm	mm	in	kg				
OH2332H	140	160	210	147	28	-	9	4.2	M160x3	M6	-	8.80	KM 32	MB 32	HMV 32E
OH2334H	150	170	220	154	29	-	9	4.2	M170x3	M6	-	9.90	KM 34	MB 34	HMV 34E
OH2336H	160	180	230	161	30	-	9	4.2	M180x3	M6	-	11.0	KM 36	MB 36	HMV 36E
OH2338H	170	190	240	169	31	-	9	4.2	M190x3	M6	-	12.0	KM 38	MB 38	HMV 38E
OH2340H	180	200	250	176	32	-	9	4.2	M200x3	M6	-	13.5	KM 40	MB 40	HMV 40E
OH2344H	200	220	280	186	35	-	9	4.2	Tr220x4	M6	-	17.0	HM 44T	MB 44	HMV 44E
OH2348H	220	240	300	199	37	-	9	4.2	Tr240x4	M6	-	19.0	HM 48T	MB 48	HMV 48E
OH2352H	240	260	330	211	39	-	9	4.2	Tr260x4	M6	-	23.0	HM 52T	MB 52	HMV 52E
OH2356H	260	280	350	224	41	-	9	4.2	Tr280x4	M6	-	27.0	HM 56T	MB 56	HMV 56E
OH3260H	280	300	380	240	40	53	9	4.2	Tr300x4	M6	-	32.0	HM 3160	MS 3160	HMV 60E
OH3264H	320	320	400	258	42	56	9	4	Tr320x5	M6	-	35.0	HM 3164	MS 3164	HMV 64E
OH3268H	320	340	440	288	55	72	9	4	Tr340x5	M6	-	51.5	HM 3168	MS 3172-68	HMV 68E
OH3272H	340	360	460	299	58	75	9	4	Tr360x5	M6	-	60.5	HM 3172	MS 3172-68	HMV 72E
OH3276H	360	380	490	310	60	77	9	4	Tr380x5	M6	-	61.5	HM 3176	MS 3176	HMV 76E
OH3280H	380	400	520	328	62	82	9	4	Tr400x5	M6	-	87.0	HM 3180	MS 3184-80	HMV 80E
OH3284H	400	420	540	352	70	90	9	4	Tr420x5	M6	-	96.0	HM 3184	MS 3184-88	HMV 84E
OH3288H	410	440	560	361	70	90	12	6.5	Tr440x5	M8	-	117	HM 3188	MS 3192-88	HMV 88E
OH3292H	430	460	580	382	75	95	12	6.5	Tr460x5	M8	-	134	HM 3192	MS 3192-88	HMV 92E
OH3296H	450	480	620	397	75	95	12	6.5	Tr480x5	M8	-	153	HM 3196	MS 3196	HMV 96E
OH32/500H	470	500	630	428	80	100	12	6	Tr500x5	M8	-	170	HM 31/500	MS 31/500	HMV 100E
OH32/530H	500	530	670	447	80	105	12	6	Tr530x6	M8	-	192	HM 31/530	MS 31/530	HMV 106E
OH32/560H	530	560	710	462	85	110	12	6	Tr560x6	M8	-	219	HM 31/560	MS 31/600-560	HMV 112E
OH32/600H	560	600	750	487	85	110	13	8	Tr600x6	-	G 1/8	278	HM 31/600	MS 31/600-560	HMV 120E
OH32/630H	600	630	800	521	95	120	12	6	Tr630x6	M8	-	300	HM 31/630	MS 31/630	HMV 126E
OH32/670H	630	670	850	558	106	131	13	8	Tr670x6	-	G 1/8	401	HM 31/670	MS 31/670	HMV 134E
OH32/710H	670	710	900	572	106	135	13	8	Tr710x7	-	G 1/8	459	HM 31/710	MS 31/710	HMV 142E
OH32/750H	710	750	950	603	112	141	13	8	Tr750x7	-	G 1/8	526	HM 31/750	MS 31/800-750	HMV 150E
OH32/800H	750	800	1000	618	112	141	13	10	Tr800x7	-	G 1/8	629	HM 31/800	MS 31/800-750	HMV 160E
OH32/850H	800	850	1060	651	118	147	13	10	Tr850x7	-	G 1/8	722	HM 31/850	MS 31/850	HMV 170E
OH32/900H	850	900	1120	660	125	154	13	10	Tr900x7	-	G 1/8	776	HM 31/900	MS 31/900	HMV 180E
OH32/950H	900	950	1170	675	125	154	13	10	Tr950x8	-	G 1/8	834	HM 31/950	MS 31/950	HMV 190E
OH32/1000H	950	1000	1240	707	125	154	13	10	Tr1000x8	-	G 1/8	952	HM 31/1000	MS 31/1000	HMV 200E

Hydraulic Adapter Sleeves

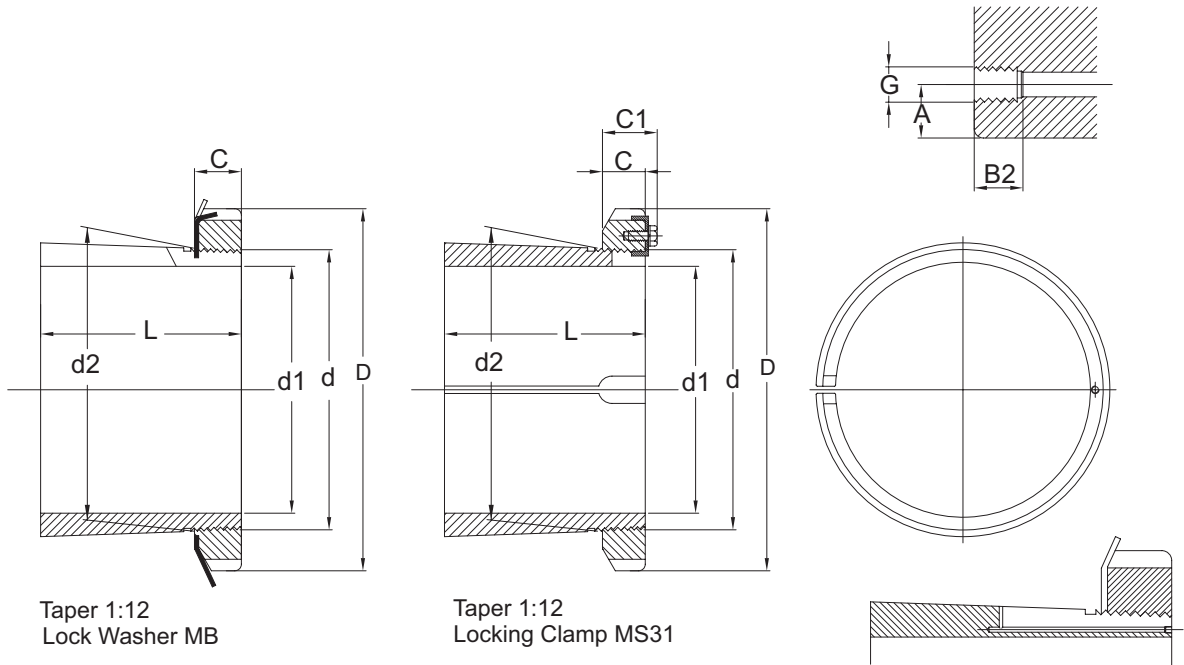
FSQ

Hydraulic Adapter Sleeves



No.	d1	d2	D	L	C	C1	B2	A	d	G		Weight	Lock nut	Locking device	Appropriate hydraulic nut
	mm	mm	mm	mm	mm	mm	mm	mm	mm	in	kg				
OH3032H	140	160	190	93	27.5	-	9	4.2	M160x3	M6	-	5.10	KML 32	MBL 32	HMV 32E
OH3034H	150	170	200	101	28.5	-	9	4.2	M170x3	M6	-	5.80	KML 34	MBL 34	HMV 34E
OH3036H	160	180	210	109	29.5	-	9	4.2	M180x3	M6	-	6.70	KML 36	MBL 36	HMV 36E
OH3038H	170	190	220	112	30.5	-	9	4.2	M190x3	M6	-	7.25	KML 38	MBL 38	HMV 38E
OH3040H	180	200	240	120	31.5	-	9	4.2	Tr200x3	M6	-	8.90	KML 40	MBL 40	HMV 40E
OH3044H	200	220	260	126	30	41	9	4.2	Tr220x4	M6	-	9.90	HM 3044	MS 3044	HMV 44E
OH3048H	220	240	290	133	34	46	9	4.2	Tr240x4	M6	-	12.0	HM 3048	MS 3052-48	HMV 48E
OH3052H	240	260	310	145	34	46	9	4.2	Tr260x4	M6	-	13.5	HM 3052	MS 3052-48	HMV 52E
OH3056H	260	280	330	152	38	50	9	4.2	Tr280x4	M6	-	16.0	HM 3056	MS 3056	HMV 56E
OH3060H	280	300	360	168	42	54	9	4.2	Tr300x4	M6	-	20.5	HM 3060	MS 3060	HMV 60E
OH3064H	300	320	380	171	42	55	9	4	Tr320x5	M6	-	22.0	HM 3064	MS 3068-64	HMV 64E
OH3068H	320	340	400	187	45	58	9	4	Tr340x5	M6	-	27.0	HM 3068	MS 3068-64	HMV 68E
OH3072H	340	360	420	188	45	58	9	4	Tr360x5	M6	-	29.0	HM 3072	MS 3072	HMV 72E
OH3076H	360	380	450	193	48	62	9	4	Tr380x5	M6	-	35.5	HM 3076	MS 3080-76	HMV 76E
OH3080H	380	400	470	210	52	66	9	4	Tr400x5	M6	-	40.0	HM 3080	MS 3080-76	HMV 80E
OH3084H	400	420	490	212	52	66	9	4	Tr420x5	M6	-	47.0	HM 3084	MS 3084	HMV 84E
OH3088H	410	440	520	228	60	77	12	6.5	Tr440x5	M8	-	65.0	HM 3088	MS 3092-88	HMV 88E
OH3092H	430	460	540	234	60	77	12	6.5	Tr460x5	M8	-	71.0	HM 3092	MS 3092-88	HMV 92E
OH3096H	450	480	560	237	60	77	12	6.5	Tr480x5	M8	-	75.0	HM 3096	MS 30/500-96	HMV 96E
OH30/500H	470	500	580	247	68	85	12	6.5	Tr500x5	M8	-	82.0	HM 30/500	MS 30/500-96	HMV 100E
OH30/530H	500	530	630	265	68	90	12	6	Tr530x6	M8	-	105	HM 30/500	MS 30/600-530	HMV 106E
OH30/560H	530	560	650	282	75	97	12	6	Tr560x6	M8	-	112	HM 30/560	MS 30/560	HMV 112E
OH30/600H	560	600	700	289	75	97	13	8	Tr600x6	-	G 1/8	147	HM 30/600	MS 30/600-530	HMV 120E
OH30/630H	600	630	730	301	75	97	12	6	Tr630x5	M8	-	138	HM 30/630	MS 30/630	HMV 126E
OH30/670H	630	670	780	324	80	102	13	8	Tr670x6	-	G 1/8	190	HM 30/670	MS 30/670	HMV 134E
OH30/710H	670	710	830	342	90	112	13	8	Tr710x7	-	G 1/8	228	HM 30/710	MS 30/710	HMV 142E
OH30/750H	710	750	870	356	90	112	13	8	Tr750x7	-	G 1/8	246	HM 30/750	MS 30/800-750	HMV 150E
OH30/800H	750	800	920	366	90	112	13	10	Tr800x7	-	G 1/8	302	HM 30/800	MS 30/800-750	HMV 160E
OH30/850H	800	850	980	380	90	115	13	10	Tr850x7	-	G 1/8	341	HM 30/850	MS 30/900-850	HMV 170E
OH30/900H	850	900	1030	400	100	125	13	10	Tr900x7	-	G 1/8	387	HM 30/900	MS 30/900-850	HMV 180E
OH30/950H	900	950	1080	420	100	125	13	10	Tr950x8	-	G 1/8	424	HM 30/950	MS 30/950	HMV 190E
OH30/1000H	950	1000	1140	430	100	125	13	10	Tr1000x8	-	G 1/8	470	HM 30/1000	MS 30/1000	HMV 200E
OH30/1060H	1000	1060	1200	447	100	125	15	12	Tr1060x8	-	G 1/4	571	HM 30/1060	MS 30/1000	HMV 212E

Hydraulic Adapter Sleeves



Taper 1:12
Lock Washer MB

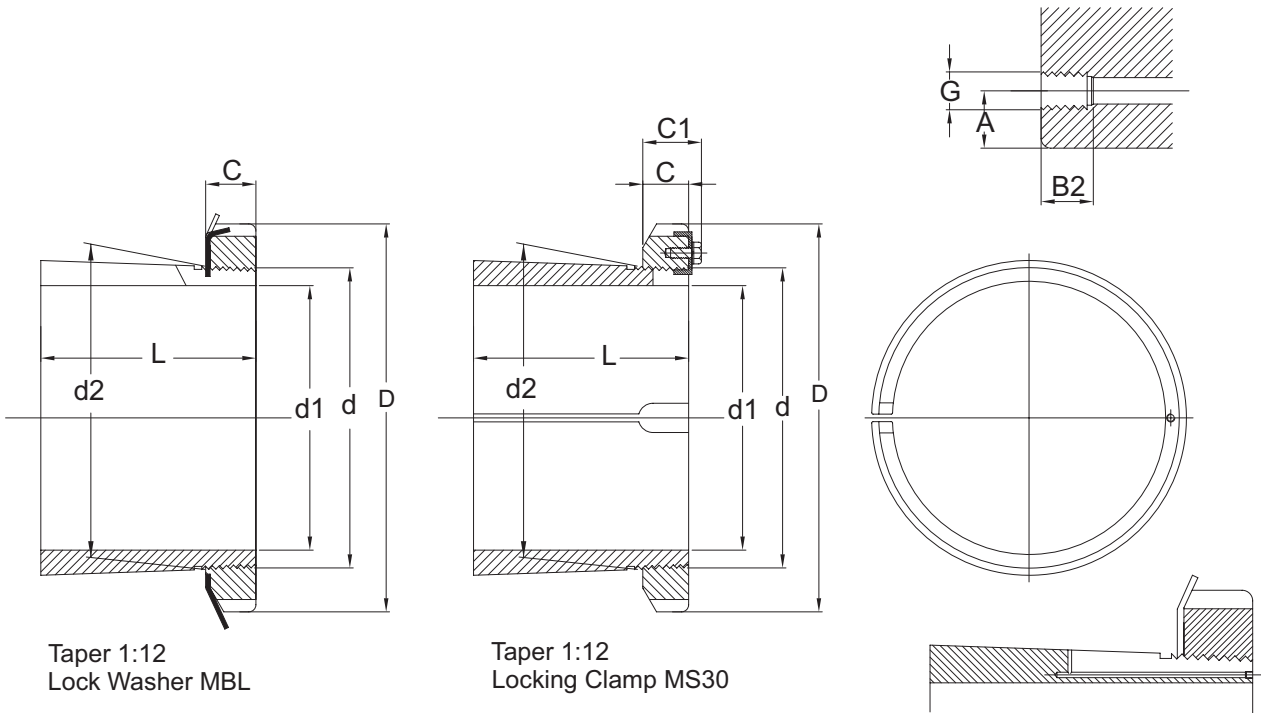
Taper 1:12
Locking Clamp MS31

No.	d1	d2	D	L	C	C1	B2	A	d	G		Weight	Lock nut	Locking device	Appropriate hydraulic nut
	mm	mm	mm	mm	mm	mm	mm	mm	mm	in	kg				
OH3134H	150	170	220	122	29	-	9	4.2	M170x3	M6	-	8.10	KM 34	MB 34	HMV 34E
OH3136H	160	180	230	131	30	-	9	4.2	M180x3	M6	-	9.15	KM 36	MB 36	HMV 36E
OH3138H	170	190	240	141	31	-	9	4.2	M190x3	M6	-	10.5	KM 38	MB 38	HMV 38E
OH3140H	180	200	250	150	32	-	9	4.2	M200x3	M6	-	12.0	KM 40	MB 40	HMV 40E
OH3144HX	200	220	280	161	35	-	9	4.2	Tr220x4	M6	-	15.0	HM 44T	MB 44	HMV 44E
OH3144H	200	220	280	161	35	-	9	4.2	Tr220x4	M6	-	15.0	HM 44T	MB 44	HMV 44E
OH3148HX	220	240	300	172	37	-	9	4.2	Tr240x4	M6	-	16.5	HM 48T	MB 48	HMV 48E
OH3148H	220	240	300	172	37	-	9	4.2	Tr240x4	M6	-	16.5	HM 48T	MB 48	HMV 48E
OH3152HX	240	260	330	190	39	-	9	4.2	Tr260x4	M6	-	21.0	HM 52T	MB 52	HMV 52E
OH3152H	240	260	330	190	39	-	9	4.2	Tr260x4	M6	-	21.0	HM 52T	MB 52	HMV 52E
OH3156HX	260	280	330	195	41	-	9	4.2	Tr280x4	M6	-	23.0	HM 56T	MB 56	HMV 56E
OH3156H	260	280	350	195	41	-	9	4.2	Tr280x4	M6	-	23.0	HM 56T	MB 56	HMV 56E
OH3160H	280	300	380	208	40	53	9	4.2	Tr300x4	M6	-	29.0	HM 3160	MS 3160	HMV 60E
OH3164H	300	320	400	226	42	56	9	4	Tr320x5	M6	-	32.0	HM 3164	MS 3164	HMV 64E
OH3168H	320	340	440	254	55	72	9	4	Tr340x5	M6	-	50.0	HM 3168	MS 3172-68	HMV 68E
OH3172H	340	360	460	259	58	75	9	4	Tr360x5	M6	-	56.0	HM 3172	MS 3172-68	HMV 72E
OH3176H	360	380	490	264	60	77	9	4	Tr380x5	M6	-	61.5	HM 3176	MS 3176	HMV 76E
OH3180H	380	400	520	272	62	82	9	4	Tr400x5	M6	-	73.0	HM 3180	MS 3184-80	HMV 80E
OH3184H	400	420	540	304	70	90	9	4	Tr420x5	M6	-	80.0	HM 3184	MS 3184-80	HMV 84E
OH3188H	410	440	560	307	70	90	12	6.5	Tr440x5	M8	-	95.0	HM 3188	MS 3192-88	HMV 88E
OH3192H	430	460	580	326	75	95	12	6.5	Tr460x5	M8	-	119	HM 3192	MS 3192-88	HMV 92E
OH3196H	450	480	620	335	75	95	12	6.5	Tr480x5	M8	-	135	HM 3196	MS 3196	HMV 96E
OH31/500H	470	500	630	356	80	100	12	6.5	Tr500x5	M8	-	145	HM 31/500	MS 31/500	HMV 100E
OH31/530H	500	530	670	364	80	105	12	6	Tr530x6	M8	-	161	HM 31/530	MS 31/530	HMV 106E
OH31/560H	530	560	710	377	85	110	12	6	Tr560x6	M8	-	185	HM 31/560	MS 31/600-56	HMV 112E
OH31/600H	560	600	750	399	85	110	13	8	Tr600x6	-	G 1/8	234	HM 31/600	MS 31/600-56	HMV 120E
OH31/630H	600	630	800	424	95	120	12	6	Tr630x5	M8	-	254	HM 31/630	MS 31/630	HMV 126E
OH31/670H	630	670	850	456	106	131	13	8	Tr670x6	-	G 1/8	340	HM 31/670	MS 31/670	HMV 134E
OH31/710H	670	710	900	467	106	135	13	8	Tr710x7	-	G 1/8	392	HM 31/710	MS 31/710	HMV 142E
OH31/750H	710	750	950	493	112	141	13	8	Tr750x7	-	G 1/8	451	HM 31/750	MS 31/750	HMV 150E
OH31/800H	750	800	1000	505	112	141	13	10	Tr800x7	-	G 1/8	535	HM 31/800	MS 31/800	HMV 160E
OH31/850H	800	850	1060	536	118	147	13	10	Tr850x7	-	G 1/8	616	HM 31/850	MS 31/850	HMV 170E
OH31/900H	850	900	1120	557	125	154	13	10	Tr900x7	-	G 1/8	667	HM 31/900	MS 31/900	HMV 180E
OH31/950H	900	950	1170	583	125	154	13	10	Tr950x8	-	G 1/8	738	HM 31/950	MS 31/950	HMV 190E
OH31/1000H	950	1000	1240	609	125	154	13	10	Tr1000x8	-	G 1/8	842	HM 31/1000	MS 31/1000	HMV 200E
OH31/1060H	1000	1060	1300	622	125	154	15	12	Tr1060x8	-	G 1/4	984	HM 31/1060	MS 31/1000	HMV 212E

Hydraulic Adapter Sleeves

FSQ

Hydraulic Adapter Sleeves



No.	d1	d2	D	L	C	C1	B2	A	d	G	Weight	Lock nut	Locking device	Appropriate hydraulic nut	
	mm	mm	mm	mm	mm	mm	mm	mm	mm	in					kg
OH3934H	150	170	200	79	28.5	-	9	4.2	M170×3	M6	-	5.00	KML 34	MBL 34	HMV 34E
OH3936H	160	180	210	87	29.5	-	9	4.2	M180×3	M6	-	5.70	KML 36	MBL 36	HMV 36E
OH3938H	170	190	220	89	30.5	-	9	4.2	M190×3	M6	-	6.20	KML 38	MBL 38	HMV 38E
OH3940H	180	200	240	98	31.5	-	9	4.2	M200×3	M6	-	7.90	KML 40	MBL 40	HMV 40E
OH3944H	200	220	260	96	30	41	9	4.2	Tr220×4	M6	-	7.95	HM 3044	MS 3044	HMV 44E
OH3948H	220	240	290	101	34	46	9	4.2	Tr240×4	M6	-	11.0	HM 3048	MS 3052-48	HMV 48E
OH3952H	240	260	310	116	34	46	9	4.2	Tr260×4	M6	-	11.7	HM 3052	MS 3052-48	HMV 52E
OH3956H	260	280	330	121	38	50	9	4.2	Tr280×4	M6	-	15.3	HM 3056	MS 3056	HMV 56E
OH3960H	280	300	360	140	42	54	9	4.2	Tr300×4	M6	-	20.0	HM 3060	MS 3060	HMV 60E
OH3964H	300	320	380	140	42	55	9	4	Tr320×5	M6	-	21.5	HM 3064	MS 3068-64	HMV 64E
OH3968H	320	340	400	144	45	58	9	4	Tr340×5	M6	-	24.5	HM 3068	MS 3068-64	HMV 68E
OH3972H	340	360	420	144	45	58	9	4	Tr360×5	M6	-	25.2	HM 3072	MS 3072	HMV 72E
OH3976H	360	380	450	164	48	62	9	4	Tr380×5	M6	-	31.5	HM 3076	MS 3080-76	HMV 76E
OH3980H	380	400	470	168	52	66	9	4	Tr400×5	M6	-	35.0	HM 3080	MS 3080-76	HMV 80E
OH3984H	400	420	490	168	52	66	9	4	Tr420×5	M6	-	36.0	HM 3084	MS 3084	HMV 84E
OH3988H	410	440	520	189	60	77	12	6.5	Tr440×5	M8	-	58.0	HM 3088	MS 3092-88	HMV 88E
OH3992H	430	460	540	189	60	77	12	6.5	Tr460×5	M8	-	60.0	HM 3092	MS 3092-88	HMV 92E
OH3996H	450	480	560	200	60	77	12	6.5	Tr480×5	M8	-	66.0	HM 3096	MS 30/500-96	HMV 96E
OH39/500H	470	500	580	208	68	85	12	6.5	Tr500×5	M8	-	74.3	HM 30/500	MS 30/500-96	HMV 100E
OH39/530H	500	530	630	216	68	90	12	6	Tr530×6	M8	-	87.9	HM 30/530	MS 30/600-530	HMV 106E
OH39/560H	530	560	650	227	75	97	12	6	Tr560×6	M8	-	95.0	HM 30/560	MS 30/560	HMV 112E
OH39/600H	560	600	700	239	75	97	13	8	Tr600×6	-	G 1/8	127	HM 30/600	MS 30/600-530	HMV 120E
OH39/630H	600	630	730	254	75	97	12	6	Tr630×6	M8	-	124	HM 30/630	MS 30/630	HMV 126E
OH39/670H	630	670	780	264	80	102	13	8	Tr670×6	-	G 1/8	162	HM 30/670	MS 30/670	HMV 134E
OH39/710H	670	710	830	286	90	112	13	8	Tr710×7	-	G 1/8	183	HM 30/710	MS 30/710	HMV 142E
OH39/750H	710	750	870	291	90	112	13	8	Tr750×7	-	G 1/8	211	HM 30/750	MS 30/800-750	HMV 150E
OH39/800H	750	800	920	303	90	112	13	10	Tr800×7	-	G 1/8	259	HM 30/800	MS 30/800-750	HMV 160E
OH39/850H	800	850	980	308	90	115	13	10	Tr850×7	-	G 1/8	288	HM 30/850	MS 30/900-850	HMV 170E
OH39/900H	850	900	1030	326	100	125	13	10	Tr900×7	-	G 1/8	330	HM 30/900	MS 30/900-850	HMV 180E
OH39/950H	900	950	1080	344	100	125	13	10	Tr950×8	-	G 1/8	362	HM 30/950	MS 30/950	HMV 190E
OH39/1000H	950	1000	1140	358	100	125	13	10	Tr1000×8	-	G 1/8	407	HM 30/1000	MS 30/1000	HMV 200E
OH39/1060H	1000	1060	1200	372	100	125	15	12	Tr1060×8	-	G 1/4	490	HM 30/1060	MS 30/1000	HMV 212E