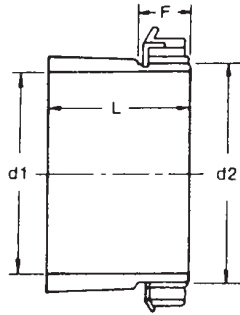
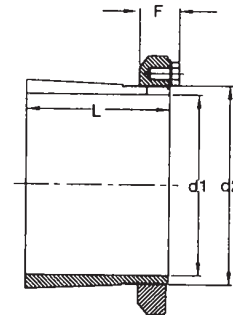


**Series: SNW3000**



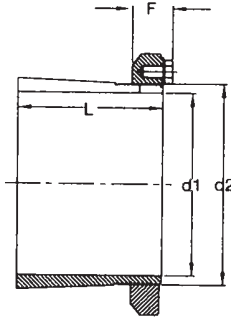
**Series: SNP3000**



Bearing Bore No.	Complete Adapter		Locknut No.	Lockwasher No.	Adapter Sleeve No.	Nominal Sleeve Dimensions inches				
	Designation	Weight lbs.				Shaft (Bore) Diameter d1	L	F	Thread Pitch Diameter d2	Threads Per inch
24	SNW 3024	6.1	AN 024	W 024	S 3024	4-3/16	2.947	1.250	4.6538	12
26	SNW 3026	7.5	AN 026	W 026	S 3026	4-7/16	3.237	1.313	5.0458	12
28	SNW 3028	8.4	AN 028	W 028	S 3028	4-15/16	3.340	1.375	5.4368	12
30	SNW 3030	9.7	AN 030	W 030	S 3030	5-3/16	3.492	1.406	5.8278	12
32	SNW 3032	11.8	AN 032	W 032	S 3032	5-7/16	3.711	1.468	6.1953	8
34	SNW 3034	13.3	AN 034	W 034	S 3034	5-15/16	4.019	1.500	6.5703	8
36	SNW 3036	15.2	AN 036	W 036	S 3036	6-7/16	4.337	1.531	6.9773	8
38	SNW 3038	16.7	AN 038	W 038	S 3038	6-15/16	4.412	1.594	7.3833	8
40	SNW 3040	19.7	AN 040	W 040	S 3040	7-3/16	4.750	1.656	7.7571	8
44	SNW 3044	24.4	N 044	W 044	S 3044	7-15/16	5.130	1.750	8.5378	8
48	SNP 3048	32.2	N 048	P 48	S 3048	8-15/16	5.432	1.968	9.3245	6
52	SNP 3052	41.1	N 052	P 52	S 3052	9-7/16	6.019	2.125	10.0742	6
56	SNP 3056	45.4	N 056	P 56	S 3056	10-7/16	6.191	2.215	10.8852	6
60	SNP 3060	58.9	N 060	P 60	S 3060	10-15/16	6.727	2.281	11.6662	6
64	SNP 3064	65.7	N 064	P 64	S 3064	11-15/16	6.946	2.375	12.4439	6
68	SNP 3068	77.8	N 068	P 68	S 3068	12-7/16	7.543	2.531	13.191	5
72	SNP 3072	86.2	N 072	P 72	S 3072	13-7/16	7.579	2.531	14.022	5
76	SNP 3076	94.3	N 076	P 76	S 3076	13-15/16	7.743	2.656	14.809	5
80	SNP 3080	105.0	N 080	P 80	S 3080	15	8.411	2.813	15.597	5
84	SNP 3084	114.2	N 084	P 84	S 3084	15-3/14	8.498	2.813	16.384	5

• Other shaft sizes are also available.

## Series: SNP3100 & SNP3200



Designations	Lock nut	Locking device	Dimensions				Weight
			L mm	d2 mm	d1	Threads Per Inch	kg
SNP 3148×8.15/16	N 048	PL 48	168.60	239.82	8.15/16	6	17
SNP 3152×9.7/16	N 052	PL 52	192.86	258.87	9.7/16	6	20
SNP 3152×9.1/2	N 052	PL 52	192.86	258.87	9.1/2	6	20
SNP 3156×10	N 056	PL 56	197.25	279.50	10	6	21
SNP 3156×10.7/16	N 056	PL 56	197.25	279.50	10.7/16	6	21
SNP 3160×10.15/16	N 060	PL 60	212.85	299.33	10.15/16	6	27
SNP 3164×11.15/16	N 064	PL 64	231.41	316.07	11.15/16	6	45.4
SNP 3164×12	N 064	PL 64	231.41	319.07	12	6	45.4
SNP 3168×12.7/16	N 068	PL 68	248.59	335.05	12.7/16	5	55.8
SNP 3172×13.7/16	N 072	PL 72	250.49	356.15	13.7/16	5	68
SNP 3176×13.15/16	N 076	PL 76	255.67	376.14	13.15/16	5	75.3
SNP 3180×14.15/16	N 080	PL 80	265.65	396.16	14.15/16	5	84.4
SNP 3184×15.3/4	N 084	PL 84	289.86	416.15	15.3/4	5	88
SNP 3188×16.1/2	N 088	PL 88	300.15	438.98	16.1/2	5	98.7
SNP 3192×17	N 092	PL 92	314.14	459.00	17	5	126
SNP 3196×18	N 096	PL 96	322.93	478.99	18	5	124

Designations	Lock nut	Locking device	Dimensions				Weight
			L mm	d2 mm	d1	Threads Per Inch	kg
SNP 3256×10.7/16	N 056	PL 56	227.25	279.50	10.7/16	6	26.8
SNP 3260×10.15/16	N 060	PL 60	244.85	299.33	10.15/16	6	31
SNP 3260×11	N 060	PL 60	244.85	299.33	11	6	31
SNP 3264×11.15/16	N 064	PL 64	263.42	319.07	11.15/16	6	44.5
SNP 3268×12.7/16	N 068	PL 68	282.6	335.05	12.7/16	5	61
SNP 3272×13.7/16	N 072	PL 72	290.5	356.15	13.7/16	5	74.8
SNP 3276×13.15/16	N 076	PL 76	301.67	376.14	13.15/16	5	84.4
SNP 3280×15	N 080	PL 80	321.66	396.16	15	5	95.7
SNP 3284×15.3/4	N 084	PL 84	337.87	416.15	15.3/4	5	97.1
SNP 3288×16.1/2	N 088	PL 88	354.15	438.98	16.1/2	5	116