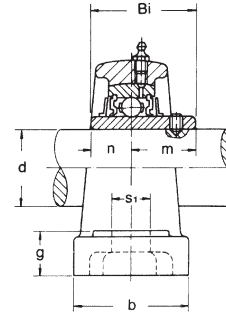
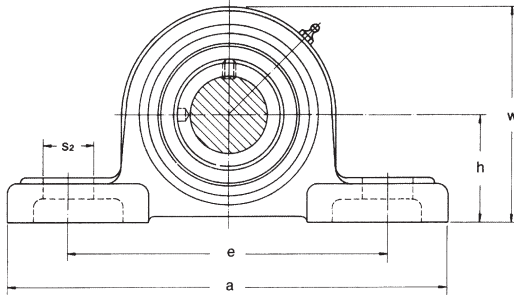


Set Screw Type - Normal Duty



Unit No.	Shaft Dia		Dimensions (in.)											Bolt Used		Bearing No.	Housing No.	Weight	
	d		(mm)											(mm)	(in.)			kg	lbs
	(in.)	(mm)	h	a	e	b	s ₂	s ₁	g	w	Bi	n	m						
UCP 201 201-8 202 202-10 203	1/2 5/8	12 15 17	1-3/16 30.2	5 127	3-3/4 95	1-1/2 38	3/4 19	1/2 13	15/32 12	2-3/8 60	1.2205 31.0	0.5000 12.7	0.7205 18.3	10 3/8	UC 201 201-8 202 202-10 203	P 203	0.65 1.43		
UCP 204-12 204	3/4	20	1-5/16 33.3	5 127	3-3/4 95	1-1/2 38	3/4 19	1/2 13	1/2 13	2-17/32 63	1.2205 31.0	0.5000 12.7	0.7205 18.3	10 3/8	UC 204-12 204	P 204	0.65 1.43		
UCP 205-14 205-15 205 205-16	7/8 15/16 1	25	1-7/16 36.5	5-1/2 140	4-1/8 105	1-1/2 38	3/4 19	1/2 13	1/2 13	2-25/31 70	1.3386 34.0	0.5630 14.3	0.7756 19.7	10 3/8	UC 205-14 205-15 205 205-16	P 205	0.79 1.74		
UCP 206-18 206 206-19	1-1/8 1-3/16	30	1-11/16 42.9	6-1/2 165	4-3/4 121	1-7/8 48	13/16 21	21/32 17	19/32 15	3-5/16 83	1.5000 38.1	0.6260 15.9	0.8740 22.2	14 1/2	UC 206-18 206 206-19	P 206	1.30 2.86		
UCP 207-20 207-21 207-22 207 207-23	1-1/4 1-5/16 1-3/8 1-7/16	35	1-7/8 47.6	6-9/16 167	5 127	1-7/8 48	13/16 21	21/32 17	5/8 16	3-21/32 92	1.6890 42.9	0.6890 17.5	1.000 25.4	14 1/2	UC 207-20 207-21 207-22 207 207-23	P 207	1.60 3.52		
UCP 208-24 208-25 208	1-1/2 1-9/16	40	1-15/16 49.2	7-1/4 184	5-13/32 137	2-1/8 54	13/16 21	21/32 17	21/32 17	3-27/32 98	1.9370 49.2	0.7480 19.0	1.1890 30.2	14 1/2	UC 208-24 208-25 208	P 208	2.00 4.40		
UCP 209-26 209-27 209-28 209	1-5/8 1-11/16 1-3/4	45	2-1/8 54.0	7-15/32 190	5-3/4 146	2-1/8 54	13/16 21	21/32 17	21/32 17	4-3/16 106	1.9370 49.2	0.7480 19.0	1.1890 30.2	14 1/2	UC 209-26 209-27 209-28 209	P 209	2.30 5.06		
UCP 210-30 210-31 210	1-7/8 1-15/16	50	2-1/4 57.2	8-1/8 206	6-1/4 159	2-3/8 60	7/8 22	25/32 20	3/4 19	4-7/16 112	2.0315 51.6	0.7480 19.0	1.2835 32.6	16 5/8	UC 210-30 210-31 210	P 210	2.70 5.94		
UCP 211-32 211-34 211 211-35	2 2-1/8 2-3/16	55	2-1/2 63.5	8-5/8 219	6-25/32 171	2-3/8 60	7/8 22	25/32 20	3/4 19	4-29/32 125	2.1890 55.6	0.8740 22.2	1.3150 33.4	16 5/8	UC 211-32 211-34 211 211-35	P 211	3.30 7.26		
UCP 212-36 212 212-38 212-39	2-1/4 2-3/8 2-7/16	60	2-3/4 69.8	9-1/2 241	7-1/4 184	2-3/4 70	1 25	25/32 20	7/8 22	5-7/16 137	2.5630 65.1	1.000 25.4	1.5630 39.7	16 5/8	UC 212-36 212 212-38 212-39	P 212	4.70 10.32		
UCP 213-40 213	2-1/2	65	3 76.2	10-7/16 265	8 203	2-3/4 70	1-3/16 30	1 25	1 25	5-29/32 150	2.5630 65.1	1.0000 25.4	1.5630 39.7	20 3/4	UC 213-40 213	P 213	5.60 12.32		

Dimensions listed is for reference only