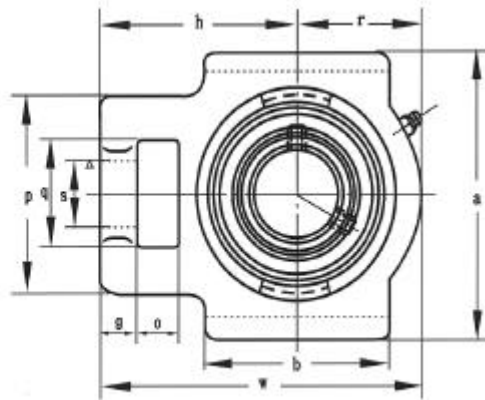
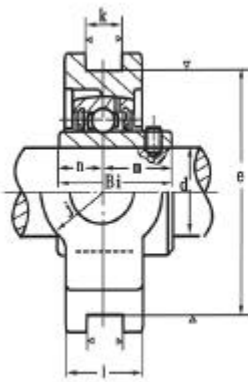


Cast Iron Take-Up Units

Set Screw Type - Normal Duty



Unit No.	Shaft Dia.		Dimensions (mm/inch)													Bearing No.	Housing No.
	mm	inch	o	g	p	q	s	b	e	a	w	j	L	h	Bi		
UCT 201	12															UC 201	T 204
UCT 201-8		1/2														UC 201-8	
UCT 202	15															UC 202	
UCT 202-10		5/8	5/8	3/8	2	1-1/4	3/4	2	3	3-1/2	3-11/16	1-1/4	15/16	2-3/8	1.2205	UC 202-10	
UCT 203	17		16	10	51	32	19	51	76	89	94	32	24	60	31.0	UC 203	
UCT 204-12		3/4														UC 204-12	
UCT 204	20															UC 204	
UCT 205	25															UC 205-14	T 205
UCT 205-14		7/8	5/8	3/8	2	1-1/4	7/8	2	3	3-1/2	3-13/16	1-1/4	15/16	2-7/16	1.3386	UC 205-15	
UCT 205-15		15/16														UC 205	
UCT 205-16		1														UC 205-16	
UCT 206	30															UC 206-18	T 206
UCT 206-18		1-1/8	5/8	3/8	2-3/16	1-7/16	7/8	2-1/4	3-1/2	4	4-7/16	1-7/16	15/16	2-3/4	1.5000	UC 206	
UCT 206-19		1-3/16														UC 206-19	
UCT 207	35															UC 207-20	T 207
UCT 207-20		1-1/4	5/8	1/2	2-1/2	1-7/16	7/8	2-1/2	3-1/2	4	5-1/16	1-7/16	1-3/16	3-1/16	1.6890	UC 207-21	
UCT 207-21		1-5/16														UC 207-22	
UCT 207-22		1-3/8														UC 207	
UCT 207-23		1-7/16														UC 207-23	
UCT 208	40															UC 208-24	T 208
UCT 208-24		1-1/2	3/4	5/8	3-1/4	1-15/16	1-1/8	3-1/4	4	4-1/2	5-11/16	1-15/16	1-3/8	3-1/2	1.9370	UC 208-25	
UCT 208-25		1-9/16														UC 208	
UCT 209	45															UC 209-26	T 209
UCT 209-26		1-5/8	3/4	5/8	3-1/4	1-15/16	1-1/8	3-1/4	4	4-5/8	5-11/16	1-15/16	1-3/8	3-7/16	1.9370	UC 209-27	
UCT 209-27		1-11/16														UC 209-28	
UCT 209-28		1-3/4														UC 209	
UCT 210	50															UC 210-30	T 210
UCT 210-30		1-7/8	3/4	5/8	3-1/4	1-15/16	1-1/8	3-3/8	4	4-5/8	5-7/8	1-15/16	1-3/8	3-9/16	2.0315	UC 210-31	
UCT 210-31		1-15/16														UC 210	
UCT 211	55															UC 211-32	T 211
UCT 211-32		2	1	3/4	4	2-1/2	1-3/8	3-3/4	5-1/8	5-3/4	6-3/4	2-1/2	1-5/8	4-3/16	2.1890	UC 211-34	
UCT 211-34		2-1/8														UC 211	
UCT 211-35		2-3/16														UC 211-35	
UCT 212	60															UC 212-36	T 212
UCT 212-36		2-1/4	1-1/4	3/4	4	2-1/2	1-3/8	4	5-1/8	5-3/4	7-5/8	2-1/2	1-13/16	4-11/16	2.5630	UC 212	
UCT 212-38		2-3/8														UC 212-38	
UCT 212-39		2-7/16														UC 212-39	
UCT 213	65															UC 213-40	T 213
UCT 213-40		2-1/2	1-1/4	13/16	4-3/8	2-3/4	1-5/8	4-3/4	5-15/16	6-9/16	8-13/16	2-3/4	1-13/16	5-3/8	2.5630	UC 213	
UCT 214	70															UC 214	T 214
UCT 215	75															UC 215	T 215